

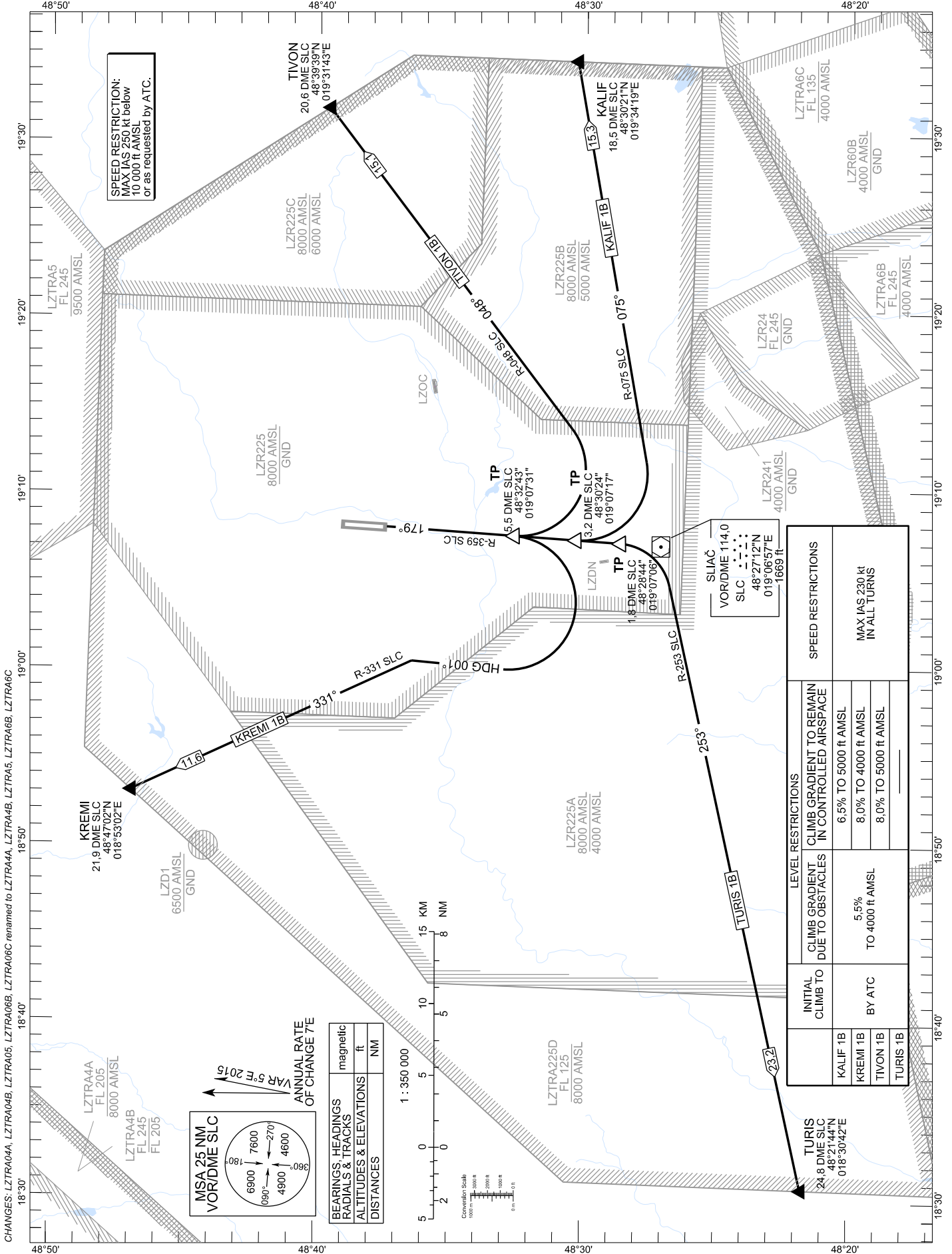
STANDARD DEPARTURE CHART -  
INSTRUMENT (SID) - ICAO

TRANSITION ALTITUDE  
10 000 ft

SLIAČ APPROACH/RADAR  
SLIAČ TOWER

119,155  
122,905

SLIAČ (LZSL)  
SID RWY 18  
ACFT CAT A/B/C/D



INITIAL CLIMB TO	LEVEL RESTRICTIONS		SPEED RESTRICTIONS
	CLIMB GRADIENT DUE TO OBSTACLES	CLIMB GRADIENT TO REMAIN IN CONTROLLED AIRSPACE	
KALIF 1B	5.5%	6.5% TO 5000 ft AMSL	MAX IAS 230 KT IN ALL TURNS
KREMI 1B	8.0% TO 4000 ft AMSL	8.0% TO 4000 ft AMSL	
TIVON 1B	8.0% TO 5000 ft AMSL	8.0% TO 5000 ft AMSL	
TURIS 1B	BY ATC	8.0% TO 5000 ft AMSL	

CHANGES: LZTRA04A, LZTRA04B, LZTRA05, LZTRA06B, LZTRA06C renamed to LZTRA4A, LZTRA4B, LZTRA45, LZTRA6B, LZTRA6C